

Series 9

High-performance media resistant solenoid valves

FEATURES

- 2-way and 3-way configurations
- Performs at high speed (opening response time ≤ 5 ms)
- Leak-tight to 1×10^{-7} cm³/s/atm Helium
- Configurable up to 1250 psi
- Offers repeatability and consistency
- Constructed of non-corrosive stainless steel
- Available with a variety of ports, seals and voltages



MEDIA COMPATIBILITY

Liquids and gases

WETTED MATERIALS

Materials contacting media:
 PTFE, stainless steel, body, seals

Body:
 316L stainless steel

Seals:
 FKM & Vespel, FKM

ELECTRICAL

Power 12 W

Voltage 12, 24 V_{DC}

Current/Resistance ($\Omega \pm 5\%$ @ 21 °C)

12 V _{DC}	1000 mA/12 Ω
24 V _{DC}	500 mA/48 Ω

PHYSICAL PROPERTIES

Operating environment 4 to 105 °C

Weight (e.g. 3-way, 1/8" NPT body) 88 g

Porting 1/4"-28 threaded ports;
 1/8" NPT (female);
 A-Lok compression fittings

Internal volume various

Series 9

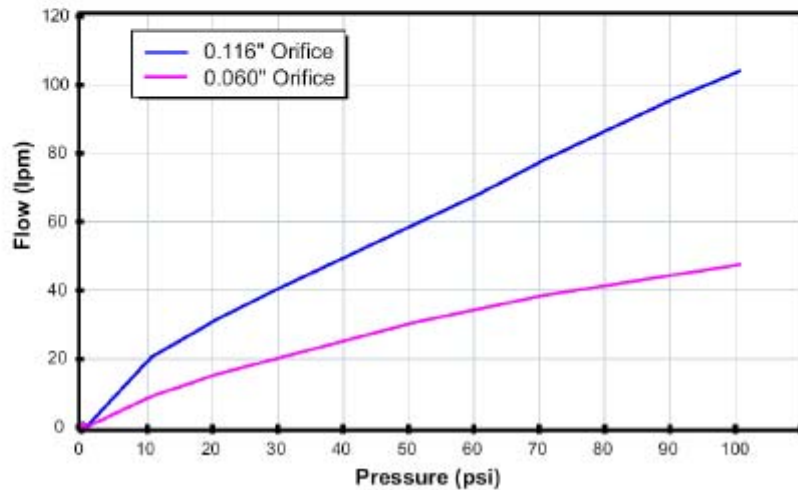
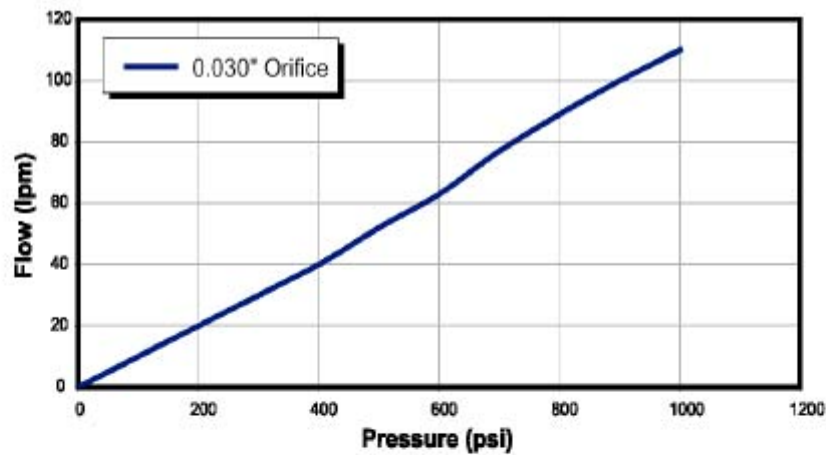
High-performance media resistant solenoid valves

PERFORMANCE CHARACTERISTICS

Part no.	Pressure	Orifice sizes	Leak rate*
See Ordering Information	Vacuum...86 bar (1250 psi)	0.030" (0.76 mm)	1 x 10 ⁻⁷ cm ³ /s/atm Helium
	Vacuum...17 bar (250 psi)	0.060" (1.52 mm)	
	Vacuum...7 bar (100 psi)	0.116" (2.99 mm)	

* Not rated for continuous duty at maximum temperature.

FLOW CURVES (typical air flow)

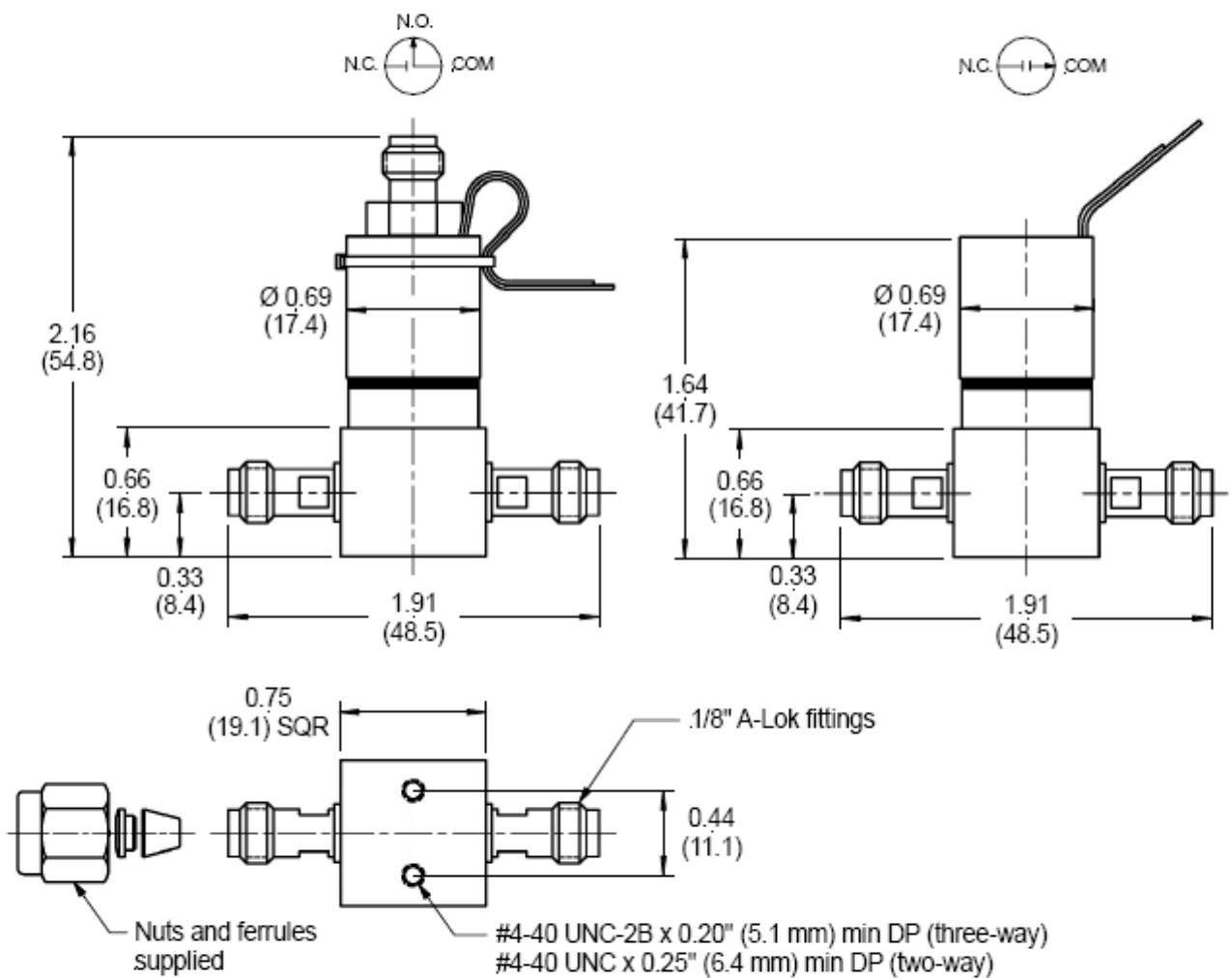


Series 9

High-performance media resistant solenoid valves

OUTLINE DRAWING

Part No. 009-0269-900 (3-way),
009-0270-900 (2-way NC)



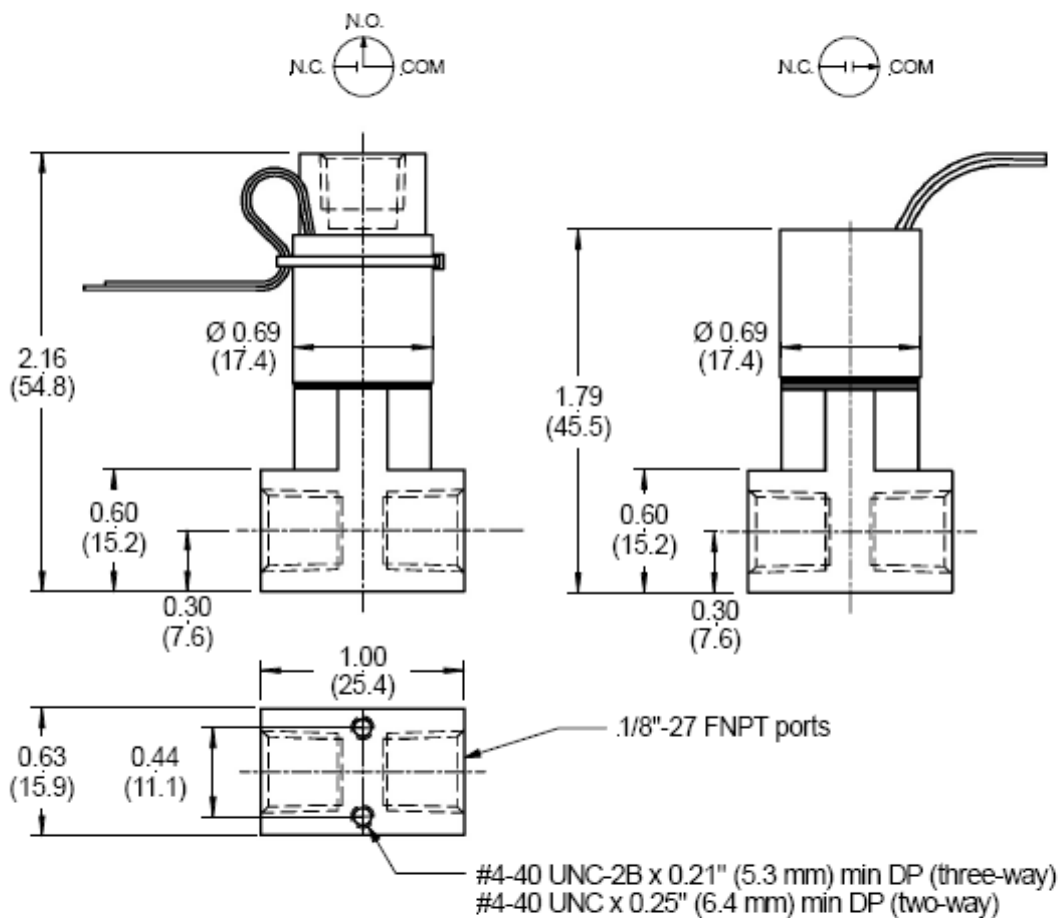
dimensions in inches (mm)

Series 9

High-performance media resistant solenoid valves

OUTLINE DRAWING (cont.)

Part No. 009-0933-900 (3-way),
009-0089-900 (2-way NC)



dimensions in inches (mm)

Series 9

High-performance media resistant solenoid valves

ORDERING INFORMATION

Part No.	Type	Operating Pressure	Orifice	Voltage	Porting	Seals
009-0100-900	2-way NC	Vac...86 bar (1250 psi)	0.76 mm (0.030")	12 V _{DC}	1/16" A-Lok	Vespel & FKM
009-0172-900				24 V _{DC}	1/4"-28	
009-0272-900					1.52 mm (0.060")	1/8" A-Lok
009-0270-900		1/8" FNPT				
009-0631-900		1/8" A-Lok				
009-0269-900	3-way	Vac...7 bar (100 psi)	2.99 mm (0.116")	12 V _{DC}	1/8" FNPT	
091-0094-900				24 V _{DC}		
009-0933-900						
009-0089-900	2-way NC	3-way	2.99 mm (0.116")	12 V _{DC}	1/8" FNPT	
009-0143-900	3-way					
009-0207-900						